

Omni Trail

ALL NEW!

SIZES & LOOK | MORE POWER. MORE CAPABLE.



New Powersteel AST & Capability STR

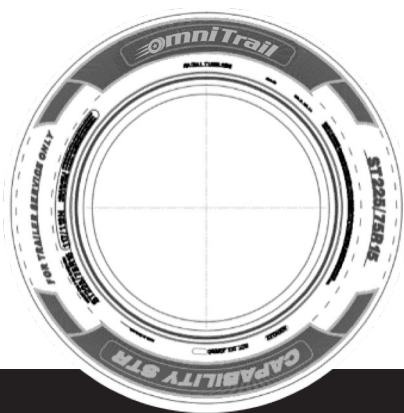


CAPABILITY STR



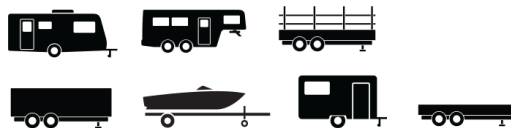
- Engineered for recreational and light duty industrial hauling equipment.
- Specially designed tread pattern and radial construction provides strength, durability, and consistent performance.
- Wide circumferential grooves provide excellent water evacuation to reduce hydroplaning.
- Free 2 Year Roadside Assistance Coverage

ITEM#	TIRE SIZE	LI/SR	MAX LOAD @ PSI	PLY/LR	TD (32NDS)	OD	SW
OT0605	ST175/80R13	91/87N	1360/1200@50	6/C	8.5	24.0	7.0
OT0610	ST185/80R13	99/95N	1710/1520@65	8/D	8.5		
OT0620	ST205/75R14	105/101N	2040/1820@65	8/D	8.5	26.1	8.0
OT0625	ST215/75R14	102/98N	1870/1760@50	6/C	8.5	26.7	8.5
OT0630	ST205/75R15	107/102N	2150/1870@65	8/D	8.5	27.1	8.0
OT0635	ST225/75R15	113/108N	2540/2200@65	8/D	8.5	28.3	8.8
OT0638	ST225/75R15	117/112N	2830/2470@80	10/E	8.5	28.3	8.8
OT0642	ST225/90R16	127/123N	3860/3420@95	12/F	8.5		
OT0650	ST235/80R16	126/122N	3740/3300@95	12/F	8.5	30.8	9.3
OT0655	ST235/85R16	128/124N	3960/3520@95	12/F	8.5		



Applications:

- RV Trailers
- 5th Wheel Trailers
- Utility Trailers
- Boat Trailers





POWERSTEEL AST

- Engineered for commercial grade heavy duty industrial hauling equipment.
- All-steel construction provides strength, durability, and reliable performance.
- Sidewall protection ribs in the upper buttress provide curb abrasion resistance.
- Integrated stone ejectors protect the tire casing by reducing stone retention.
- Free 2 Year Roadside Assistance Coverage

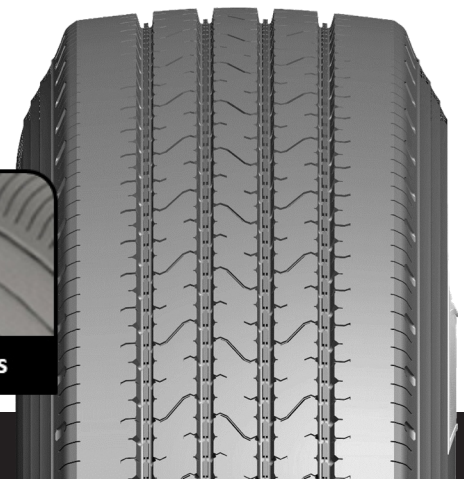
ITEM#	TIRE SIZE	LI/SR	MAX LOAD @ PSI	PLY/LR	TD (32NDS)	OD	SW
OT0685	ST225/90R16	129/125N	4080/3640@110	14/G	10.0	31.7	8.5
OT0688	ST235/80R16	129/125N	4080/3640@110	14/G	10.0	31.1	9.3
OT0690	ST235/85R16	132/127N	4400/3860@110	14/G	10.0	31.7	9.3

Applications:

- RV Trailers
- 5th Wheel Trailers
- Utility Trailers
- Boat Trailers
- Livestock Trailers



Sidewall protection ribs



Limited Warranty

Omni Trail Capability STR and Powersteel AST Tires Limited Protection Policy

Thank you for your interest in Omni Trail STR and AST brand tires for your utility trailer. We are proud of the quality and performance of Omni Trail STR and AST products and we understand that your continued satisfaction is essential to our success.

Eligibility

This Limited Protection Policy applies to Omni Trail STR and AST trailer tires purchased on or after November 1, 2023, or, in the absence of proof of purchase, tires with a manufacturing DOT code reading DOT 4523 or later. Eligible STR tires are covered by this Limited Protection Policy for up to 36 months and 72 months for AST from the tire manufacturer date. This Limited Protection Policy applies to the original owner of new Omni Trail STR or AST specialty trailer tires that are operated in normal service and used on the same utility trailer on which they were originally installed according to the trailer manufacturer's recommendations. Only Omni Trail STR tires purchased and operated in the United States and Canada are covered by this Limited Protection Policy. For Omni Trail STR or AST branded product purchased thru an online retailer, a tire claim must go back to the original selling Omni Trail dealer. The online retailer where the Omni Trail STR or AST branded product was purchased would need to facilitate the claim with that authorized Omni Trail dealer on the consumer's behalf.

What is covered by our exclusive No Questions Asked, 25/365 Free Replacement Limited Protection Policy?

The Omni Trail STR and AST **No Questions Asked, 25/365 Free Replacement Limited Protection Policy** will fully cover (100% credit) all eligible Omni Trail STR or AST specialty trailer tires should one become unserviceable due to workmanship, materials, road hazard or a condition other than those listed below during the first 25% of usable treadwear or one year from date of purchase, whichever occurs first.

Tires not eligible for the **No Questions Asked, 25/365 Free Replacement Limited Protection Policy** that are removed from service due to a covered condition will be replaced with a comparable new Omni Trail Capability STR or AST brand tire on a prorated basis for a period up to 36 months and 72 months for the Powersteel AST from the date of purchase or tire manufacturer date, or when the treadwear indicators become visible (worn to 2/32"), whichever occurs first.

What is a comparable tire?

A comparable tire may be either the same line and pattern of tire or, in the event that the tire is not available, a tire of the same construction and quality with a different sidewall or tread configuration. If a higher priced tire is accepted as replacement, the difference in price will be at an additional charge to the owner. Any Omni Trail STR or AST brand replacement tire provided pursuant to this Limited Protection Policy will be covered by the Omni Trail Limited Protection Policy in effect at the time of replacement.

Pattern	Coverage Plan (Miles/km)	25/365	Workmanship & Materials (Mo.)
Capability STR	N/A	Yes	36
Powersteel AST	N/A	Yes	72

What is not covered by the Limited Protection Policy?

- Improper operation or maintenance. This includes, but is not limited to, effects caused by improper tire inflation and/or improper load/speed practices and/or improper or insufficient tire rotation.
- Wear due to improper vehicle alignment including but not limited to, uneven, cupping, irregular, spotty and feathering wear
- Deliberate abuse or vandalism
- Ride or vibration complaint after the first 1/32" of treadwear
- Ozone after 36mo. for STR and 48mo. For AST from the DOT.
- Damage due to snow chain usage, improper mounting/dismounting or automotive accident
- Tires used in a commercial applications are not eligible for 25/365 or Mileage coverage where applicable.

Owner's obligations

To make an eligible claim under this Limited Protection Policy, tires must be rotated with the prescribed rotation patterns as recommended by either the vehicle owner's manual or an authorized Omni Trail STR/AST tire dealer. Owner must present an original tire sales invoice indicating the date of purchase, tire description and odometer mileage. Adjustment tires must be presented to an authorized Omni Trail STR dealer and those tires replaced become the property of Omni Trail STR/AST tires. Installation charges such as mounting, dismounting and balancing, as well as, any applicable taxes and government-mandated charges on the services rendered at the time of adjustment is the owner's responsibility. Adjustment claims must be completed on an approved claim form, supplied by an authorized Omni Trail STR dealer, and submitted at time of adjustment.

What are your legal rights?

No Representative or Dealer has authority to make any representation, promise or agreement on behalf of Omni Trail STR/AST, except as stated herein.

Any tire, no matter how well constructed, may fail in service or otherwise become unserviceable due to conditions beyond the control of the tire manufacturer. Under no circumstances is this Limited Protection Policy a representation that a tire failure cannot occur. This Limited Protection Policy gives you specific legal rights and you may also have other rights that vary from state to state or province to province.

Disclaimer: This Limited Protection Policy is in lieu of, and Omni Trail STR Tires hereby disclaims, any and all other Limited Protection Policies and representations, express or implied, including without limitation any Protection Policy of merchantability of fitness for a particular purpose, and no other Limited Protection Policy or representation of any kind is made by Omni Trail STR Tires or shall be implied by law. This Limited Protection Policy is subject to change without notice.

Limitation of damages: In no event and under no circumstance shall Omni Trail STR Tires be liable to the buyer for any indirect, special, incidental, consequential, lost profit, loss of business, loss of goodwill or reputation, punitive or other damage, cost (including for replacement transportation), expense or loss of any kind. Some states and provinces do not allow the exclusion or limitation of incidental or consequential damages, so the above limitation or exclusion may not apply to you.

Omni Trail STR/AST tire care and maintenance guide

Proper inflation pressure is essential for optimum tire performance, safety, and fuel economy. Check for proper inflation pressure at least monthly while tires are cool, as tires will warm up from use after several miles so it is best to check before driving. Use a quality handheld accurate air pressure gauge. It is best to occasionally have your Omni Trail STR/AST tires inspected by a professional tire shop, as it is difficult to tell just by looking at radial tires whether they are under-inflated or over-inflated. Furthermore, when operating a vehicle equipped with radial tires, it is difficult to notice when a tire has gone flat or nearly flat since the handling of the vehicle may not deteriorate significantly. Remember to always maintain inflation pressure at the level recommended by the vehicle manufacturer as shown on the vehicle placard, on the vehicle certification label or in the vehicle owner's manual.

Evidence of air loss or repeated under-inflation always requires expert inspection to determine the source of leakage and tire removal to determine repairability. To avoid injury, NEVER attempt to re-inflate a tire that has been in operation severely under-inflated. Progressive air loss may result from a variety of conditions such as punctures, cuts, curbing, impacts or partial bead unsealing. Some installation or fitment causes for air loss are (1) incomplete bead seating, (2) tearing of the tire bead caused by a machine tool due to insufficient lubrication or improper adjustment, and (3) leaking valve core or rubber valve components. These should be corrected or replaced when problems are detected and/or whenever tires are replaced.

Under-inflation is the leading cause of tire failure and may result in severe cracking, component separation or complete loss of air. Under-inflation reduces tire load carrying capacity, allows for excessive sidewall flexing and increases rolling resistance, resulting in potential heat build-up and mechanical damage. Maintaining proper inflation pressure is the most important thing you can do to help promote tire safety, durability and maximize tread life.

Over-inflation will deteriorate ride quality, reduce braking ability and generate unwanted vibration. Over-inflation also increases the chances of impact damage.

Don't overload your tires

The maximum load capacity stamped on the sidewalls of STR or AST tires. Never fit P-metric tires or LT tires on any utility trailer. STR and AST tires are specifically made to run max PSI and carry greater loads than equivalent size P-metric or LT tires.