

2024 CATALOG

VENEZIA

PASSENGER & LIGHT TRUCK TIRES



ABOUT US

Venezia tires grab the road and don't let go, giving you better traction and premium control. Whether you're looking for high-performance, low-profile, off-road or classic white-wall tires, we have the solutions to meet any budget. We are committed to providing high-quality, high-performance tires at the right price for all drivers. Backed by our No Questions Asked, 25/365 Free Replacement Limited Protection Policy, Venezia delivers confidence and performance wherever you travel.

VENEZIA

PASSENGER & LIGHT TRUCK TIRES

PRODUCT LINEUP

CRUSADE HP	CRUSADE SXT	CRUSADE SUV	CLASSIC 787	CRUSADE H/S & H/T	CRUSADE A/T	CRUSADE M/T
Ultra High Performance	Grand Touring	Sport Truck	Raised White Stripe Touring	Highway SUV and Light Truck	All-Terrain	Max-Traction
45,000 Mile Limited Warranty	60,000 Mile Limited Warranty	60,000 Mile Limited Warranty		50,000 Mile Limited Warranty	50,000 Mile Limited Warranty	
All-Season	All-Season	All-Season	All-Season	All-Season	All-Season	All-Season
Handling and Control	Comfort and Reliability	Handling and Control	Comfort and Reliability	Load Carrying and Durability	On/Off-Road Capability and Durability	Extreme Off-Road Traction and Durability

TABLE OF CONTENTS

PASSENGER & PERFORMANCE TIRES

ALL-SEASON UHP CRUSADE HP	5-6
ALL-SEASON TOURING CRUSADE SXT	7-8
CLASSIC 787	9

SUV & LIGHT TRUCK TIRES

HIGHWAY SUV/LT CRUSADE H/S	11
CRUSADE SUV	12
CRUSADE H/T	13
ALL-TERRAIN SUV/LT CRUSADE A/T	14
MUD-TERRAIN CRUSADE M/T	15

LIMITED PROTECTION PLAN	16
--------------------------------	-----------

VENEZIA

PASSENGER TIRES



CRUSADE ▶ HP

Now available in 56 sizes, the Crusade HP is a high-quality, high-value, ultra-high-performance tire with all-season capabilities. The distinctive twin-type center rib design provides exceptional high-speed stability and confident braking while the silica compound optimizes performance in adverse conditions. The Crusade HP is the ideal all-in-one tire for today's performance vehicles. Backed by our No Questions Asked, 25/365 Free Replacement Limited Protection Policy and a 45,000-mile treadwear expectancy, the Crusade HP delivers when you need it the most.



45K MILE COVERAGE

Size	LI/SR	Tread Depth	Overall Diameter	Section Width	STD Rim Width	Max Load @ PSI	UTQG	Stock #
195/50R15	82V	10	22.72	7.91	6.00	1047@44	500AA	VZT263
205/55ZR16 XL	94W	10	24.88	8.43	6.50	1477@49	500AA	VZT265
215/55ZR16 XL	97W	10	25.28	8.90	7.00	1609@49	500AA	VZT266
215/55ZR17 XL	98W	10	26.30	8.90	7.00	1653@49	500AA	VZT240
225/55ZR17 XL	101W	10	26.77	9.17	7.00	1819@49	500AA	VZT241
205/50ZR17 XL	93W	10	25.12	8.43	6.50	1433@49	500AA	VZT282
215/50ZR17 XL	95W	10	25.51	8.90	7.00	1521@49	500AA	VZT235
225/50ZR17 XL	98W	10	25.91	9.17	7.00	1653@49	500AA	VZT285
235/50ZR17 XL	100W	10	26.30	9.65	7.50	1764@49	500AA	VZT286
215/45ZR17 XL	91W	10	24.65	8.39	7.00	1356@49	500AA	VZT275
225/45ZR17 XL	94W	10	24.96	8.86	7.50	1477@49	500AA	VZT277
235/45ZR17 XL	97W	10	25.35	9.29	8.00	1609@49	500AA	VZT279
245/45ZR17 XL	99W	10	25.67	9.57	8.00	1709@49	500AA	VZT280
205/40ZR17 XL	84W	10	23.46	8.35	7.50	1102@49	500AA	VZT270
235/40R17	90W	10	24.41	9.49	8.50	1477@44	500AA	VZT313
245/40ZR17	95W	10	24.72	9.76	8.50	1521@44	500AA	VZT281
275/40R17	98W	10	25.67	10.94	9.50	1653@44	500AA	VZT317
225/45ZR18 XL	95W	10	25.94	8.86	7.50	1521@49	500AA	VZT296
235/45ZR18 XL	98W	10	26.34	9.29	8.00	1653@49	500AA	VZT400
245/45ZR18 XL	100W	10	26.65	9.57	8.00	1764@49	500AA	VZT298
255/45R18 XL	103W	10	27.05	10.04	8.50	1929@49	500AA	VZT301
215/40R18 XL	89W	10	24.76	8.58	7.50	1279@49	500AA	VZT274
225/40ZR18 XL	92W	10	25.08	9.06	8.00	1389@49	500AA	VZT295
235/40R18 XL	95Y	10	25.39	9.49	8.50	1521@49	500AA	VZT278
245/40ZR18 XL	97W	10	25.71	9.76	8.50	1609@49	500AA	VZT297
255/40ZR18 XL	99W	10	26.02	10.24	9.00	1709@49	500AA	VZT299
215/35ZR18 XL	84W	10	23.90	8.58	7.50	1102@49	500AA	VZT290
255/35ZR18 XL	94W	10	25.00	10.24	9.00	1477@49	500AA	VZT255
265/35ZR18 XL	97W	10	25.31	10.67	9.50	1609@49	500AA	VZT267

CRUSADE ▶ HP

Now available in 56 sizes, the Crusade HP is a high-quality, high-value, ultra-high-performance tire with all-season capabilities. The distinctive twin-type center rib design provides exceptional high-speed stability and confident braking while the silica compound optimizes performance in adverse conditions. The Crusade HP is the ideal all-in-one tire for today's performance vehicles. Backed by our No Questions Asked, 25/365 Free Replacement Limited Protection Policy and a 45,000-mile treadwear expectancy, the Crusade HP delivers when you need it the most.



45K MILE COVERAGE

Size	LI/SR	Tread Depth	Overall Diameter	Section Width	STD Rim Width	Max Load @ PSI	UTQG	Stock #
275/35ZR18 XL	99W	10	25.55	10.94	9.50	1709@49	500AA	VZT268
255/45R19 XL	104Y	10	28.07	10.04	8.50	1984@49	500AA	VZT302
225/40R19 XL	93Y	10	26.10	8.59	8.00	4133@49	500AA	VZT293
235/40R19 XL	96W	10	26.42	9.25	8.50	1565@49	500AA	VZT315
245/40R19 XL	98Y	10	26.69	9.80	8.50	1653@49	500AA	VZT294
225/35R19 XL	88W	10	25.24	9.06	8.00	1235@49	500AA	VZT311
235/35ZR19 XL	91W	10	25.47	9.49	8.50	1356@49	500AA	VZT291
245/35ZR19 XL	93W	10	25.79	9.76	8.50	1433@49	500AA	VZT292
255/35R19 XL	96W	10	26.02	10.24	9.00	1565@49	500AA	VZT256
265/30R19 XL	93W	10	25.32	10.67	9.50	1433@49	500AA	VZT348
275/30R19 XL	96W	10	25.55	10.94	9.50	1565@49	500AA	VZT269
245/45ZR20 XL	103W	10	28.66	9.57	8.00	1929@49	500AA	VZT320
255/45R20	105W	10	29.06	10.04	8.50	2039@49	500AA	VZT304
245/40ZR20 XL	99W	10	27.72	9.76	8.50	1709@49	500AA	VZT340
275/40ZR20 XL	106W	10	28.66	10.94	9.50	2094@49	500AA	VZT318
225/35ZR20 XL	90W	10	26.22	9.06	8.00	1323@49	500AA	VZT312
235/35ZR20 XL	92W	10	26.46	9.49	8.50	1389@49	500AA	VZT314
245/35ZR20 XL	95W	10	26.77	9.76	8.50	1521@49	500AA	VZT310
255/35ZR20 XL	97W	10	27.01	10.24	9.00	1609@49	500AA	VZT316
275/35ZR20 XL	102W	10	27.56	10.94	9.50	1874@49	500AA	VZT330
225/30ZR20 XL	85W	10	25.35	9.06	8.00	1135@49	500AA	VZT305
235/30ZR22 XL	90W	10	27.60	9.49	8.50	1323@49	500AA	VZT322
245/30ZR22 XL	92W	10	27.83	9.76	8.50	1389@49	500AA	VZT325
255/30R22 XL	95V	10	28.07	10.24	9.00	1521@49	500AA	VZT327
265/30ZR22 XL	97W	10	28.31	10.67	9.50	1609@49	500AA	VZT350
295/30R22 XL	103W	10.5	29.02	11.61	10.50	1929@49	500AA	VZT448
295/25R22 XL	97W	10.5	27.80	11.61	10.50	1609@49	500AA	VZT446

CRUSADE ▶ SXT

This premium, performance-oriented, grand touring tire is developed with VDMS - Variable Depth Micro-positioning Siping - technology that provides enhanced traction and handling on all surfaces, in all weather conditions. Uniquely designed for cars, CUVs, SUVs and trucks, the Crusade SXT is the preferred choice for anyone looking for exceptional value, peace-of-mind and affordability. Backed by our No Questions Asked, 25/365 Free Replacement Limited Protection Policy and a 60,000-mile treadwear expectancy.



60K MILE COVERAGE

Size	LI/SR	Tread Depth	Overall Diameter	Section Width	STD Rim Width	Max Load @ PSI	UTQG	Stock #
195/65R15	91H	10	25.00	7.91	6.00	1356@44	500AA	VZ605
205/65R15	94H	10	25.47	8.23	6.00	1477@49	500AA	VZ615
195/60R15	88H	10	24.21	7.91	6.00	1235@44	500AA	VZ600
205/60R15	91H	10	24.69	8.23	6.00	1356@44	500AA	VZ603
195/55R15	85V	10	23.43	7.91	6.00	1135@44	500AA	VZ610
225/65R16	100T	10	27.48	9.00	6.50	1764@44	500AB	VZ648
205/60R16	92H	10	25.67	8.19	6.00	1389@44	500AA	VZ620
215/60R16	95V	10	26.14	8.70	6.50	1521@44	500AA	VZ630
225/60R16	98H	10	26.61	8.98	6.50	1653@44	500AA	VZ625
205/55R16 XL	94V	10	24.88	8.43	6.50	1477@50	500AA	VZ602
215/55R16 XL	97V	10	25.28	8.90	7.00	1609@50	500AA	VZ622
235/70R17 XL	109T	10	30.00	9.45	7.00	2271@50	500AB	VZ639
235/65R17	104H	10	29.06	9.45	7.00	1984@44	500AA	VZ638
215/65R17	99V	10	28.03	8.70	6.50	1709@44	500AA	VZ651
225/65R17 XL	106V	10	28.50	8.98	6.50	2094@50	500AA	VZ640
225/60R17	99H	10	27.64	8.98	6.50	1709@44	500AB	VZ645
235/60R17 XL	106H	10	28.11	9.45	7.00	2094@50	500AA	VZ644
215/55R17 XL	98V	10	26.30	8.90	7.00	1653@50	500AA	VZ650
225/55R17 XL	101V	10	26.77	9.17	7.00	1819@50	500AA	VZ646
235/55R17	99V	10	27.17	9.65	7.50	1709@44	500AA	VZ637
215/50R17 XL	95V	10	25.51	8.90	7.00	1521@50	500AA	VZ635
225/50R17 XL	98V	10	25.91	9.20	7.00	1653@50	500AA	VZ652
235/50R17 XL	100V	10	26.30	9.65	7.50	1764@50	500AA	VZ641
265/70R18	116T	10	32.64	10.71	8.00	2756@44	500AB	VZ659
235/65R18	106T	10	30.04	9.45	7.00	2094@44	500AB	VZ656
255/65R18	111T	10	29.09	9.45	7.00	2149@50	500AB	VZ674
265/65R18	114T	10	31.54	10.71	8.00	2601@44	500AB	VZ658
275/65R18	116T	10	32.09	10.98	8.00	2756@44	500AB	VZ657
235/60R18 XL	107H	10	31.06	10.24	7.50	2403@44	500AB	VZ671

CRUSADE ▶ SXT

This premium, performance-oriented, grand touring tire is developed with VDMS - Variable Depth Micro-positioning Siping - technology that provides enhanced traction and handling on all surfaces, in all weather conditions. Uniquely designed for cars, CUVs, SUVs and trucks, the Crusade SXT is the preferred choice for anyone looking for exceptional value, peace-of-mind and affordability. Backed by our No Questions Asked, 25/365 Free Replacement Limited Protection Policy and a 60,000-mile treadwear expectancy.



60K MILE COVERAGE

Size	LI/SR	Tread Depth	Overall Diameter	Section Width	STD Rim Width	Max Load @ PSI	UTQG	Stock #
245/60R18	105H	10	29.57	9.76	7.00	2039@44	500AA	VZ672
265/60R18	110H	10	30.51	10.71	8.00	2336@44	500AA	VZ677
255/55R18 XL	109V	10	29.02	10.43	8.00	2270@50	500AA	VZ673
235/55R18 XL	104V	10	28.15	9.65	7.50	1984@50	500AA	VZ669
225/55R18 XL	102V	10	27.76	9.17	7.00	1874@50	500AA	VZ661
225/50R18	95V	10	26.89	9.20	7.00	1521@44	500AA	VZ654
235/50R18 XL	101H	10	27.28	9.65	7.50	1819@50	500AA	VZ667
235/50R18 XL	101W	10	27.28	9.65	7.50	1819@50	500AA	VZ668
225/45R18 XL	95V	10	25.94	8.86	7.50	1521@50	500AA	VZ643
235/45R18 XL	98V	10	26.34	9.29	8.00	1653@50	500AA	VZ665
245/45R18 XL	100V	10	26.65	9.57	8.00	1764@50	500AA	VZ670
255/60R19	109H	10	31.06	10.24	7.50	2271@44	500AA	VZ660
225/55R19	99V	10	27.78	9.17	7.00	1709@44	500AA	VZ692
235/55R19 XL	105V	10	29.17	9.65	7.50	2039@50	500AA	VZ691
245/55R19	103H	10	29.65	9.96	7.50	1929@44	500AA	VZ690
255/50R19 XL	107H	10	29.09	10.43	8.00	2149@50	500AA	VZ695
275/60R20	115T	10	32.99	10.98	8.00	2679@44	500AB	VZ686
275/55R20	113H	10	31.89	11.18	8.50	2535@44	500AA	VZ675
245/50R20	102V	10	29.69	10.00	7.50	1874@44	500AA	VZ662
255/50R20 XL	109V	10	30.08	10.43	8.00	2271@50	500AA	VZ663
265/50R20	107V	10	30.47	10.91	8.50	2149@44	500AA	VZ664

CRUSADE ▶ 787

The Classic 787 is a traditional all-season white sidewall design with slotted shoulders and a wear resistant tread compound for long, trouble-free mileage and a quiet ride. With wide longitudinal grooves for great handling in both wet and dry conditions and a flexible body design that improves ride comfort and stability, the Classic 787 is ready for the open road. Backed by our No Questions Asked, 25/365 Free Replacement Limited Protection Policy.



Size	LI/SR	Tread Depth	Overall Diameter	Section Width	STD Rim Width	Max Load @ PSI	UTQG	Stock #
195/75R14 WSW	92S	10.5	25.51	7.72	5.50	1400@44	440AB	VZ001
205/75R14 WSW	95S	10.5	26.14	7.99	5.50	1532@44	440AB	VZ003
215/75R14 WSW	98S	10.5	26.69	8.50	6.00	1664@44	440AB	VZ005
205/75R15 WSW	97S	10.5	27.13	7.99	5.50	1598@44	440AB	VZ030
215/75R15 WSW	100S	10.5	27.68	8.50	6.00	1742@44	440AB	VZ039
225/75R15 WSW	102S	10.5	28.31	8.78	6.00	1874@44	440AB	VZ048
235/75R15 WSW	105S	10.5	28.86	9.25	6.50	2028@44	440AB	VZ058
235/75R15 BSW	105S	10.5	28.86	9.25	6.50	2028@44	440AB	VZ060
* 205/70R14 BSW	93S	10.5	25.35	8.23	6.00	1433@44	440AB	VZ009
* 215/70R14 BSW	96S	10.5	25.91	8.70	6.50	1554@44	440AB	VZ008
* 205/70R15 BSW	95S	10.5	26.34	8.23	6.00	1499@44	440AB	VZ012
215/70R15 WSW	97S	10.5	26.89	8.70	6.50	1620@44	440AB	VZ015
225/70R15 WSW	100S	10.5	27.44	8.98	6.50	1753@44	440AB	VZ020

*Tires only available with black sidewall

VENEZIA

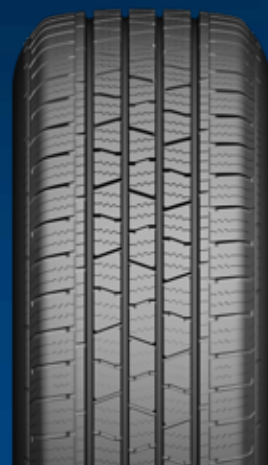
SUV & LIGHT TRUCK TIRES



CRUSADE ▶ H/S



The workhorse of the Venezia line, the Crusade H/T & H/S is designed to be durable and dependable. The modern dual pitch (A/B) pattern provides a quiet and comfortable ride with consistent, long-lasting performance. Large circumferential grooves evacuate water for improved traction in the rain. Optimized siping provides excellent traction and braking performance in wet and light snow conditions. A solid center and shoulder elements provide responsive handling and stability. Backed by our No Questions Asked, 25/365 Free Replacement Limited Protection Policy and a 50k mile treadwear protection, the Crusade H/T & H/S is ready to work.



50K MILE COVERAGE

Size	LI/SR	Tread Depth	Overall Diameter	Section Width	Max Load @ PSI	UTQG	Stock #
215/70R16	100H	10	27.87	8.70	1764@44	500AA	VZT0690
225/70R16	103H	10	28.43	8.98	1929@44	500AA	VZT0700
235/70R16	106H	10	28.98	9.45	2094@44	500AA	VZT0710
245/70R16	107H	10	29.53	9.76	2149@44	500AA	VZT0720
255/70R16	111H	10	30.08	10.24	2403@44	500AA	VZT0331
265/70R16	112T	10	30.63	10.71	2469@44	500AA	VZT0730
225/65R17	102H	10	28.50	8.98	1874@44	500AA	VZT0760
235/65R17	108H	10	29.06	9.45	2205@49	500AA	VZT0770
245/65R17	107H	10	29.53	9.76	2149@44	500AA	VZT0790
245/70R17	110H	10	30.55	9.76	2337@44	500AA	VZT0800
265/65R17	112H	10	30.55	10.71	2469@44	500AA	VZT0810
265/70R17	115H	10	31.65	10.71	2679@44	500AA	VZT0820
235/55R18	104V	10	28.15	9.65	1984@49	500AA	VZT0830
255/65R18	111T	10	31.06	10.24	2403@44	500AA	VZT0391
255/70R18	113T	10	32.09	10.24	2535@44	500AA	VZT0390
265/60R18	110H	10	30.51	10.71	2337@44	500AA	VZT0850
275/55R20	117H	11	31.89	11.18	2833@49	500AA	VZT0870
285/45R22	114H	10	32.09	11.22	2601@50	500AA	VZT0885

CRUSADE ▶ SUV

The Crusade SUV is engineered with a unique staggered-center rib design for a stable feel and responsive handling in all weather conditions. With a variable pitch pattern and sipe distribution, the Crusade SUV provides a quiet, comfortable ride while maintaining excellent traction in wet and dry conditions. Designed for modern crossovers and SUVs, the Crusade SUV provides year-round driving confidence. Backed by our No Questions Asked, 25/365 Free Replacement Limited Protection Policy and a 45,000-mile treadwear expectancy.



45K MILE COVERAGE

Size	LI/SR	Tread Depth	Overall Diameter	Section Width	STD Rim Width	Max Load @ PSI	UTQG	Stock #
235/55R20	102H	11	30.16	9.50	7.50	1874@44	500AA	VZT408
255/55R20	107H	11	31.22	10.30	8.00	2150@44	500AA	VZT402
275/55R20 XL	117V	11	31.89	11.18	8.50	2833@49	500AA	VZT411
285/50R20 XL	116V	11	31.26	11.69	9.00	2756@49	500AA	VZT412
275/45R20 XL	110V	11	29.76	10.75	9.00	2337@49	500AA	VZT410
275/40ZR20 XL	106W	10	28.66	10.94	9.50	2094@49	500AA	VZT405
275/45R22	112V	11	31.80	10.70	9.00	2469@50	500AA	VZT413
285/45R22 XL	114V	10	32.09	11.22	9.50	2601@49	500AA	VZT431
305/45R22 XL	118V	11	32.80	11.93	10.00	2910@49	500AA	VZT434
265/40R22 XL	106V	11	30.35	10.67	9.50	2094@49	500AA	VZT420
305/40R22 XL	114V	11	31.61	12.32	11.00	2601@49	500AA	VZT424
265/35R22 XL	102V	10	29.33	10.67	9.50	1874@49	500AA	VZT415
285/35R22 XL	106V	11	29.88	11.42	10.00	2094@49	500AA	VZT416
295/35R24	110V	11	32.30	11.90	11.00	2337@50	500AA	VZT449
305/35R24 XL	112V	11	32.44	12.32	11.00	2469@49	500AA	VZT440
255/30ZR24 XL	97W	10	30.08	10.24	9.00	1609@49	500AA	VZT439
275/25ZR24 XL	96W	11	29.45	11.14	10.00	1565@49	500AA	VZT438
295/30ZR26 XL	107W	11	32.99	11.85	10.50	2149@49	500AA	VZT450
305/30ZR26 XL	109W	11	33.23	12.32	11.00	2271@49	500AA	VZT545

CRUSADE ▶ H/T



The workhorse of the Venezia line, the Crusade H/T & H/S is designed to be durable and dependable. The modern dual pitch (A/B) pattern provides a quiet and comfortable ride with consistent, long-lasting performance. Large circumferential grooves evacuate water for improved traction in the rain. Optimized siping provides excellent traction and braking performance in wet and light snow conditions. A solid center and shoulder elements provide responsive handling and stability. Backed by our No Questions Asked, 25/365 Free Replacement Limited Protection Policy and a 50k mile treadwear protection, the Crusade H/T & H/S is ready to work.



50K MILE COVERAGE

Size	LI/SR	Tread Depth	Overall Diameter	Section Width	PLY	Max Load @ PSI	Stock #
LT215/85R16	115/112S	13	30.39	8.50	10	2680/2470@80	VZT2000
LT225/75R16	115/112S	13	29.29	8.78	10	2680/2470@80	VZT2020
LT235/85R16	120/116S	13	31.73	9.25	10	3042/2778@80	VZT2010
LT245/75R16	120/116S	13	30.47	9.76	10	3042/2778@80	VZT2030
LT245/75R16	120/116S	13	30.47	9.76	10	3042/2778@80	VZT2030
LT265/75R16	123/120S	13	31.65	10.51	10	3415/3085@80	VZT2040
LT235/80R17	120/117S	12	31.81	9.25	--	3085/2835@80	VZT2045
LT245/75R17	121/118S	13	31.50	9.76	10	3195/2910@80	VZT2041
LT265/70R17	121/118S	13	31.65	10.71	10	3195/2910@80	VZT2044
LT265/70R18	124/121S	12	32.64	10.71	--	3525/3195@80	VZT2051
LT275/70R18	125/122S	15	33.19	10.98	10	3640/3305@80	VZT2046
LT275/65R18	123/120S	12	32.09	10.98	--	3415/3085@80	VZT2047

CRUSADE ▶ A/T



The all-new Crusade A/T is designed to provide on-road performance with off-road durability. The offset chevron grooves provide added traction in mud, dirt, and other soft surface terrain. Optimized siping provides improved wet traction, element flexibility and severe weather rated snow traction. The variable pitch pattern reduces noise propagation to provide a quiet and comfortable ride. Backed by our No Questions Asked, 25/365 Free Replacement Limited Protection Policy and a 50k mile treadwear protection, the Crusade A/T is ready for your next adventure.

50K MILE COVERAGE

Size	LI/SR	Tread Depth	Overall Diameter	Section Width	STD Rim Width	Max Load @ PSI	UTQG	Stock #
235/75R15	105	13	28.86	9.25	-	2039@44	500AA	VZT1010
245/75R16	111	13	30.47	9.76	-	2403@44	500AA	VZT1035
245/70R16	111T	12	29.53	9.76	-	2403@50	500AA	VZT1066
265/70R16	112	13	30.63	10.71	-	2469@44	500AA	VZT1080
265/75R16	116	13	31.65	10.51	-	2756@44	500AA	VZT1065
245/65R17	107	13	29.53	9.76	-	2149@44	500AA	VZT1030
265/65R17	112T	12	30.55	10.71	-	2469@44	500AA	VZT1031
245/70R17	110	13	30.55	9.76	-	2337@44	500AA	VZT1050
265/70R17	115	13	31.65	10.71	-	2679@44	500AA	VZT1085
255/70R18	113T	12	32.09	10.24	-	2535@44	500AA	VZT0510
265/70R18	116	13	32.64	10.71	-	2756@44	500AA	VZT0517
275/65R18	116	13	32.09	10.98	-	2756@44	500AA	VZT0518
275/55R20	117	13	31.89	11.18	-	2833@49	500AA	VZT1105
275/60R20	115	13	32.99	10.98	-	2679@44	500AA	VZT0519
LT235/85R16	120/116	13	31.73	9.25	10	3042/2778@80	-	VZT1020
LT235/75R15	104/101	14	28.86	9.25	6	1985/1820@50	-	VZT1015
LT215/85R16	115/112	14	30.39	8.5	10	2680/2470@80	-	VZT1005
LT225/75R16	115/112	14	29.29	8.78	10	2680/2470@80	-	VZT1000
LT245/75R16	120/116	16	30.47	9.76	10	3042/2778@80	-	VZT1040
LT265/75R16	123/120	16	31.65	10.51	10	3415/3085@80	-	VZT1070
LT285/75R16	126/123	17	32.83	11.26	10	3750/3415@80	-	VZT0436
LT235/80R17	120/117	14	31.81	9.25	10	3085/2835@80	-	VZT0650
LT245/75R17	121/118	16	31.5	9.76	10	3195/2910@80	-	VZT1055
LT265/70R17	121/118	16	31.65	10.71	10	3195/2910@80	-	VZT1090
LT285/70R17	121/118	17	32.76	11.5	10	3195/2910@80	-	VZT1110
LT265/70R18	124S	15	32.64	10.71	-	3525/3195@80	-	VZT1111
LT275/70R18	125/122S	15	33.19	10.98	-	3640/3305@80	-	VZT1113
LT275/65R18	123/120S	15	32.09	10.98	-	3415/3085@80	-	VZT1115
LT275/65R20	126/123S	15	34.09	10.98	-	3750/3415@80	-	VZT1117
31X10.50R15LT	109	16	30.51	10.55	6	2270@50	-	VZT1095
35X12.50R20LT	121	16	34.53	12.52	10	3195@65	-	VZT1120

CRUSADE ▶ M/T

Mud, dirt, and rough terrain are no match for the all new Crusade M/T. This highly aggressive dual pitch pattern provides excellent off-road performance. The 3-ply sidewall and integrated stone ejectors protect while optimized siping provides flexibility without sacrificing durability. A deep buttress area provides additional traction in soft surfaces. Backed by our No Questions Asked, 25/365 Free Replacement Limited Protection Policy, the Crusade M/T is ready for the path less traveled.



Size	LI/SR	Tread Depth	Overall Diameter	Section Width	PLY	Max Load @ PSI	Stock #
LT235/75R15	110/107S	18	28.86	9.25	8	2335/2150@65	VZT2467
LT265/75R16	123/120Q	18	31.65	10.51	10	3415/3085@80	VZT2457
LT285/75R16	126/123R	19.5	32.83	11.26	10	3750/3415@80	VZT2459
LT305/70R16	124/121Q	19	32.83	12.24	-	3525/3195@65	VZT2456
LT315/75R16	127/124Q	19.5	34.57	12.32	10	3860/3525@65	VZT2484
LT265/70R17	121/118Q	19.5	31.65	10.71	10	3195/2910@80	VZT2461
LT285/70R17	121/118Q	19.5	32.76	11.5	10	3195/2910@80	VZT2473
LT295/70R17	121/118Q	19.5	33.31	11.77	10	3195/2910@80	VZT2454
LT275/65R18	123/120Q	19.5	32.09	10.98	10	3415/3085@80	VZT2492
LT275/70R18	125/122Q	19.5	33.19	10.98	10	3640/3305@80	VZT2472
LT285/65R18	125/122Q	19	32.56	11.5	-	3640/3305@80	VZT2494
LT275/55R20	120/117Q	19	31.89	11.18	-	3085/2835@80	VZT2490
LT275/60R20	123/120Q	19	32.99	10.98	-	3415/3085@80	VZT2489
LT275/65R20	126/123Q	19	34.09	10.98	-	3750/3415@80	VZT2488
LT285/55R20	122/119Q	19	32.36	11.69	-	3305/3000@80	VZT2491
31X10.50R15LT	109Q	18	30.52	10.54	6	2270@50	VZT2463
32X11.50R15LT	113Q	19.5	31.52	11.42	6	2535@50	VZT2496
33X12.50R15LT	108Q	20	32.52	12.5	6	2205@35	VZT2465
35X12.50R15LT	113Q	20	34.52	12.5	6	2535@35	VZT2498
33X12.50R17LT	114Q	19.5	32.52	12.5	8	2600@50	VZT2300
35X12.50R17LT	121Q	20	34.52	12.5	10	3195@65	VZT2466
33X12.50R18LT	122Q	20	32.52	12.5	12	3305@80	VZT2477
35X12.50R18LT	128Q	20	34.52	12.5	12	3970@80	VZT2478
33X12.50R20LT	119Q	19	32.52	12.5	12	3000@80	VZT2480
35X12.50R20LT	125Q	20	34.52	12.5	12	3640@80	VZT2479
37x13.50R20LT	127/Q	19	36.54	13.58	-	3860@65	VZT2482
33X12.50R22LT	114R	19.5	32.52	12.5	12	2600@80	VZT2304
35X12.50R22LT	121Q	19.5	34.52	12.5	12	3195@80	VZT2483
37X13.50R22LT	128Q	19.5	36.52	13.58	12	3970@80	VZT2487



Thank you for your interest in Venezia brand tires for your vehicle. We are proud of the quality and performance of the wide range of Venezia products and we understand that your continued satisfaction is essential to our success.

ELIGIBILITY

This Limited Protection Policy applies to Venezia brand passenger and light truck tires purchased on or after January 1, 2020, or, in the absence of proof of purchase, tires with a manufacturing DOT code reading DOT 0120 or later. Eligible tires are covered by this Limited Protection Policy for up to 60 months from the date of purchase or tire manufacturer date. This Limited Protection Policy applies to the original owner of new Venezia branded passenger and light truck tires that are operated in normal service, and used on the same vehicle on which they were originally installed according to the vehicle manufacturer's recommendations. Only Venezia tires purchased and operated in the United States and Canada are covered by this Limited Protection Policy.

WHAT IS COVERED BY OUR EXCLUSIVE NO QUESTIONS ASKED, 25/365 FREE REPLACEMENT LIMITED PROTECTION POLICY?

The Venezia No Questions Asked, 25/365 Free Replacement Limited Protection Policy will fully cover (100% credit) all eligible Venezia brand passenger and light truck tires should one become unserviceable due to defective workmanship, materials, road hazard or a condition other than those listed below during the first 25% of usable treadwear or one year from date of purchase, whichever occurs first.

Tires not eligible for the No Questions Asked, 25/365 Free Replacement Limited Protection Policy that are removed from service due to a covered condition will be replaced with a comparable new Venezia brand tire on a prorated basis for a period up to 60 months from the date of purchase or tire manufacturer date, or when the treadwear indicators become visible (worn to 2/32"), whichever occurs first.

WHAT IS A COMPARABLE TIRE?

A comparable tire may be either the same line and pattern of tire or, in the event that the tire is not available, a tire of the same construction and quality with a different sidewall or tread configuration. If a higher priced tire is accepted as replacement, the difference in price will be at an additional charge to the owner. Any Venezia brand replacement tire provided pursuant to this Limited Protection Policy will be covered by the Venezia Limited Protection Policy in effect at the time of replacement.

MILEAGE COVERAGE PLAN

If an eligible tire wears down to the treadwear indicator bars (2/32") and the tire has not delivered the miles specified below, Venezia will provide a prorated adjustment based on actual mileage delivered. The cost of mounting, balancing and any other service charges including applicable taxes are excluded from reimbursement.

Pattern	Coverage Plan (Miles/Km)	25/365	Workmanship & Materials (Mo.)
Crusade HP	45,000/70,000	Yes	60
Crusade SUV	45,000/70,000	Yes	60
Crusade SXT	60,000/70,000	Yes	60
Classic 787	N/A	Yes	60
Crusade A/T	50,000/80,000	Yes	60
Crusade H/S	50,000/80,000	Yes	60
Crusade H/T	50,000/80,000	Yes	60
Crusade M/T	N/A	Yes	60

The Mileage Coverage Plan applies only to the original purchaser and the tires have been used only on the vehicle on which they were originally installed according to the vehicle manufacturer's recommendations. The Mileage Coverage Plan does not apply to tires used in commercial applications. Tires that have not been rotated at least every 6,000 miles as evidenced by a completed rotation schedule are excluded. Likewise, tires in service for more than 60 months regardless of mileage attained are excluded.

WHAT IS NOT COVERED BY THE LIMITED PROTECTION POLICY?

(1) Improper operation or maintenance. This includes, but is not limited to, effects caused by improper tire inflation and/or improper load/speed practices and/or improper or insufficient tire rotation. (2) Wear due to improper vehicle alignment including but not limited to, uneven, cupping, irregular, spotty and feathering wear. (3) Deliberate abuse or vandalism. Ride or vibration complaint after the first 1/32" of treadwear. (4) Damage due to snow chain usage,

improper mounting/dismounting or automotive accident. (5) Tires used in commercial applications are not eligible for 25/365 or Mileage coverage where applicable.

OWNER'S OBLIGATIONS

To make an eligible claim under this Limited Protection Policy, tires must be rotated with the prescribed rotation patterns as recommended be either the vehicle owner's manual or an authorized Venezia tire dealer. Owner must present an original tire sales invoice indicating the date of purchase, tire description and odometer mileage. Adjustment tires must be presented to an authorized Venezia dealer and those tires replaced become the property of Venezia Tires. Installation charges such as mounting, dismounting and balancing as well as any applicable taxes and government-mandated charges on the services rendered at the time of adjustment is the owner's responsibility. Adjustment claims must be completed on an approved claim form, supplied by an authorized Venezia dealer, and submitted at time of adjustment.

WHAT ARE YOUR LEGAL RIGHTS?

No Representative or Dealer has authority to make any representation, promise or agreement on behalf of Venezia, except as stated herein.

Any tire, no matter how well constructed, may fail in service or otherwise become unserviceable due to conditions beyond the control of the tire manufacturer. Under no circumstances is this Limited Protection Policy a representation that a tire failure cannot occur. This Limited Protection Policy gives you specific legal rights and you may also have other rights that vary from state to state or province to province.

Disclaimer: This Limited Protection Policy is in lieu of, and Venezia Tires hereby disclaims, any and all other Limited Protection Policies and representations, express or implied, including without limitation any Protection Policy of merchantability of fitness for a particular purpose, and no other Limited Protection Policy or representation of any kind is made by Venezia Tires or shall be implied by law. This Limited Protection Policy is subject to change without notice.

Limitation of damages: In no event and under no circumstance shall Venezia Tires be liable to the buyer for any indirect, special, incidental, consequential, lost profit, loss of business, loss of goodwill or reputation, punitive or other damage, cost (including for replacement transportation), expense or loss of any kind. Some states and provinces do not allow the exclusion or limitation of incidental or consequential damages, so the above limitation or exclusion may not apply to you.

VENEZIA TIRE CARE AND MAINTENANCE GUIDE

Proper inflation pressure is essential for optimum tire performance, safety, and fuel economy. Check for proper inflation pressure at least monthly while tires are cool, as tires will warm up from use after a number of miles so it is best to check before driving. Use a quality handheld accurate air pressure gauge. It is best to occasionally have your Venezia tires inspected by a professional tire shop, as it is difficult to tell just by looking at radial tires whether they are under-inflated or over-inflated. Furthermore, when operating a vehicle equipped with radial tires, it is difficult to notice when a tire has gone flat or nearly flat since the handling of the vehicle may not deteriorate significantly. Remember to always maintain inflation pressure at the level recommended by the vehicle manufacturer as shown on the vehicle placard, on the vehicle certification label or in the vehicle owner's manual.

Evidence of air loss or repeated under-inflation always requires expert inspection to determine the source of leakage and tire removal to determine repairability. To avoid injury, NEVER attempt to re-inflate a tire that has been in operation severely under-inflated. Progressive air loss may result from a variety of conditions such as punctures, cuts, curbing, impacts or partial bead unsealing. Some installation or fitment causes for air loss are (1) incomplete bead seating, (2) tearing of the tire bead caused by a machine tool due to insufficient lubrication or improper adjustment, (3) leaking valve core or rubber valve components. These should be corrected or replaced when problems are detected and/or whenever tires are replaced.

Under-inflation is the leading cause of tire failure and may result in severe cracking, component separation or complete loss of air. Under-inflation reduces tire load carrying capacity, allows for excessive sidewall flexing and increased rolling resistance, resulting in potential heat build-up and mechanical damage. Maintaining proper inflation pressure is the most important thing you can do to help promote tire safety, durability and maximize tread life.

Over-inflation will deteriorate ride quality, reduce braking ability and generate unwanted vibration. Over-inflation also increases the chances of impact damage.

DON'T OVERLOAD YOUR VEHICLE

The maximum load capacity stamped on the sidewalls of P-metric tires is reduced by ten percent for light truck, utility vehicle or trailer. Never fit P-metric tires to light trucks that specify ure replacement tires.

VeneziaTires.com

American Omni Trading Company

1221 Park West Green Dr. | Katy, TX 77493
Corporate Phone | 281-600-TIRE
american-omni.com

12/23 Rev1